



PUBLIC NOTICE

Temporary Closure of Chinaman Creek Dam Area – Authorised Animal Management Activities

Cloncurry Shire Council wishes to advise residents that a wild dog (dingo) has been sighted in the vicinity of Chinaman Creek Dam Road and surrounding recreational areas.

The animal has been observed displaying limited fear of humans and vehicles, which may present a risk to members of the public using the walking track, picnic areas and other recreational facilities.

In the interest of public safety, the **Chinaman Creek Dam area**, including the walking track and surrounding recreational spaces, **will be temporarily closed from:**

**3:00pm Thursday, 26 February 2026, re-opening no later than 8:00pm
Thursday, 26 February 2026.**

Council Rangers will be undertaking authorized animal management activities during this period.

Council representatives will be located at the vehicle and pedestrian entry points, to ensure community compliance with the closures.

Members of the public are asked to avoid the area during the closure period and exercise caution more broadly.

Community members are reminded to:

- Remain alert when in the area
- Keep children and pets close and supervised
- Avoid approaching or attempting to interact with the animal
- Report any further sightings to Council immediately

CLONCURRY SHIRE COUNCIL

☎ 07 4742 4100

✉ council@cloncurry.qld.gov.au

🏠 38-46 Daintree Street, Cloncurry QLD 4824

☎ 07 4742 1712

🌐 www.cloncurry.qld.gov.au

✉ PO Box 3 Cloncurry QLD 4824

Council appreciates the community's cooperation while these activities are undertaken.

For further information or to report a sighting, please contact Council on (07) 4742 4100.

Gary Pemberton

Acting - Chief Executive Officer

26 February 2026

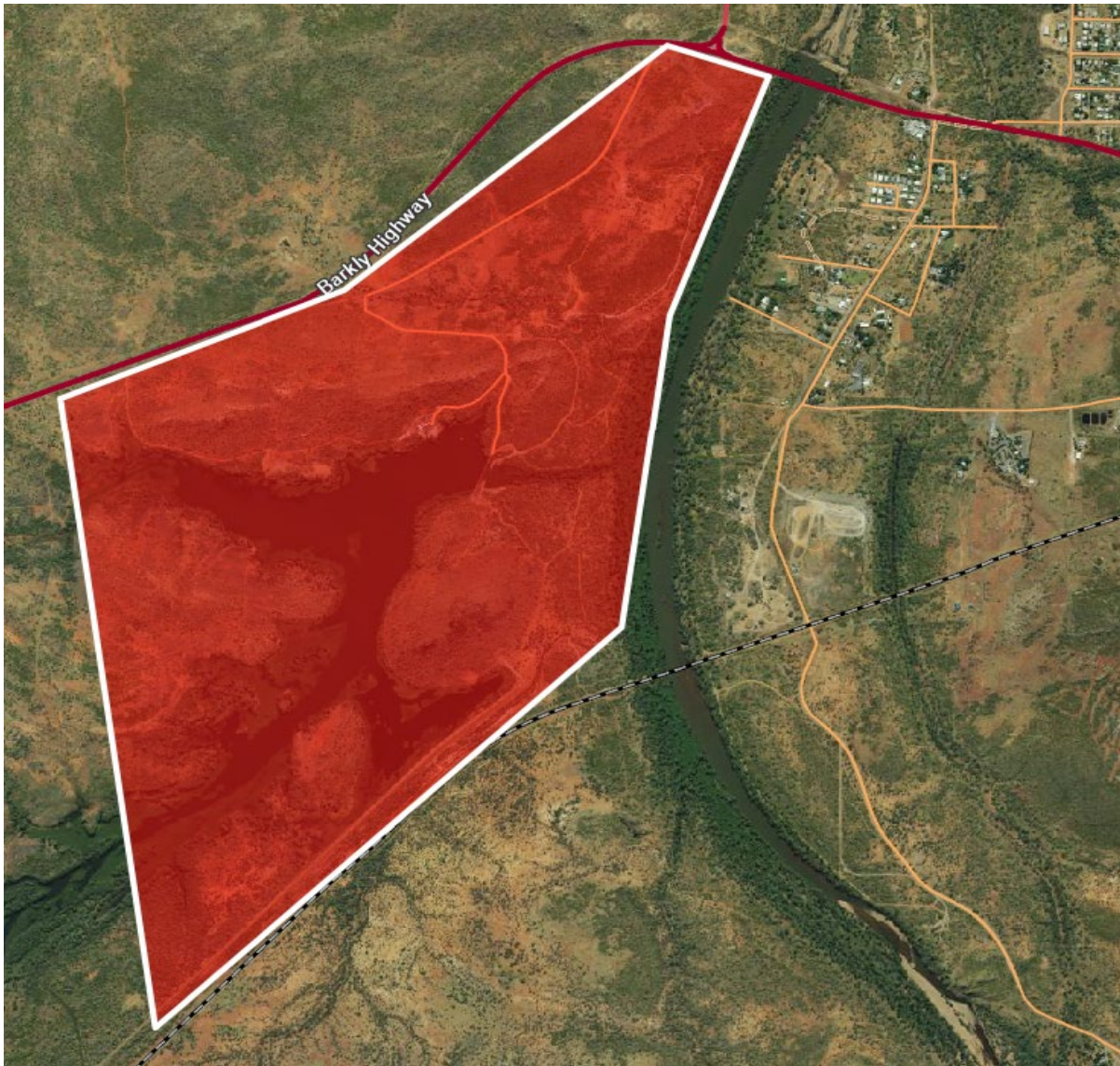


Image: Chinaman Creek Dam Area Closure

CLONCURRY SHIRE COUNCIL

☎ 07 4742 4100

✉ council@cloncurry.qld.gov.au

🏠 38-46 Daintree Street, Cloncurry QLD 4824

☎ 07 4742 1712

🌐 www.cloncurry.qld.gov.au

✉ PO Box 3 Cloncurry QLD 4824